



Boat Sales



www.farndonmarina.co.uk

alex.boden@farndonmarina.co.uk

Tel No: 01636 705483

Name:

All That Jaz



Manufacturer:	Maxum	Model:	2700SE	Year:	2004
Ref:	FHM3374	Lying:	Farndon Marina		
		Price:	£39,995		
LOA:	8.53 mtrs (28ft 1in)	Beam:	2.99m (9ft 10in)		
Draft:	0.99m (3ft 3in)	Construction:	GRP		
Hull:	Planing	Cruising speed:	25 Knots		
Engines:	Volvo KAMD 44	Drive type:	Stern Drive		
Fuel/Capacity:	Diesel	Shore support:	Yes		
Colour:	White/Blue stripe	Accommodation:	4 berths in 2 cabins		
Layout:	Aft cockpit	Bow thruster:	Yes		
Heads No:	1 Electric	Holding tank:	Yes		
Water capacity:	N/K	Water system:	Calorifier/Immersion		
Showers:	1	Heating:	N/A		

A VERY WELL CARED FOR SPORTS CRUISER

The Company normally acts as broker for the vendors who unless otherwise stated is not selling in the course of a business. Whilst every care has been taken in the preparation of these particulars the correctness is not guaranteed and they are intended as a guide only and do not constitute a part of any contract. A prospective buyer is strongly advised to check these particulars and at his own expense to employ a qualified marine surveyor to carry out a survey and / or to have an engine trial conducted by us shall not imply any liability on our part.

Accommodation: All That Jaz is a lovely boat and a credit to her current owners. Early viewing is strongly recommended.

Access is via the port side transom door into the spacious cockpit. There's a wet bar port side with storage below and ample seating with a stern bench seat, rear face seating and table and a chaise longue for enjoying the sun. The helm benefits from the popular twin seat which has stowage beneath. The dashboard is very clear and well laid out and has a nice sporty feel to it.

You then step down into the bright and airy cabin which is in good condition.

Under the cabin is the usual double berth.

The galley is port side and fitted with a single Origo hob and microwave oven, stainless steel sink with mixer tap (hot water via calorifier/immersion). There is storage below the sink with drawers and a discreet, stowaway for the bin. The control panel is located between the double berth and galley.

Opposite the galley is the surprisingly large shower/toilet compartment. This is fitted with an electric sea toilet to holding tank, over sink shower, hand basin and storage.

Next to the shower compartment is the fridge and high line storage. This leads onto the large dinette which converts to another double berth with stowage below.

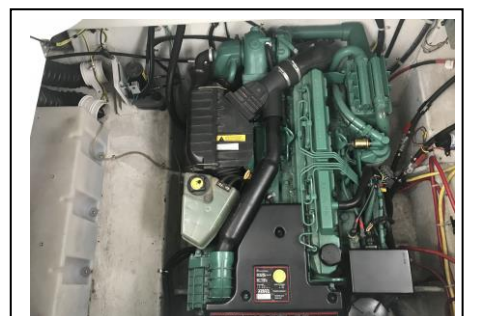
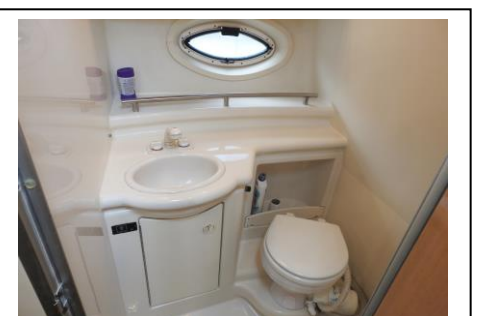
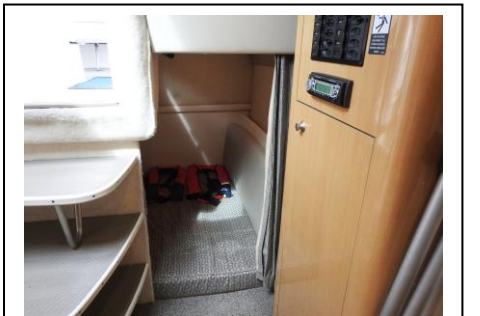
Inventory: Navigation lights, GPS, DSC VHF radio, speed log, depth sounder, Fishfinder, 240V shore support and Battery charger.

Deck: Anchor, anchor chain, bow thruster, electric windlass, windscreen wiper, remote control spot light, TV antenna, fenders, warps, stainless steel pulpit and grab rails, transom shower (hot & cold), bathing platform.

Safety: Automatic engine room fire extinguisher, fire extinguishers, fire blanket, horn, electric bilge pump and BSS till 25.02.2020.

End of report





Farndon Marina | North End | Farndon | Newark | Nottinghamshire | NG24 3SX

Directors P Ainsworth (Managing) • J Ainsworth (Secretary) • Registered in England No. 1121991 • Farndon Harbour Moorings Ltd T/A Farndon Marina